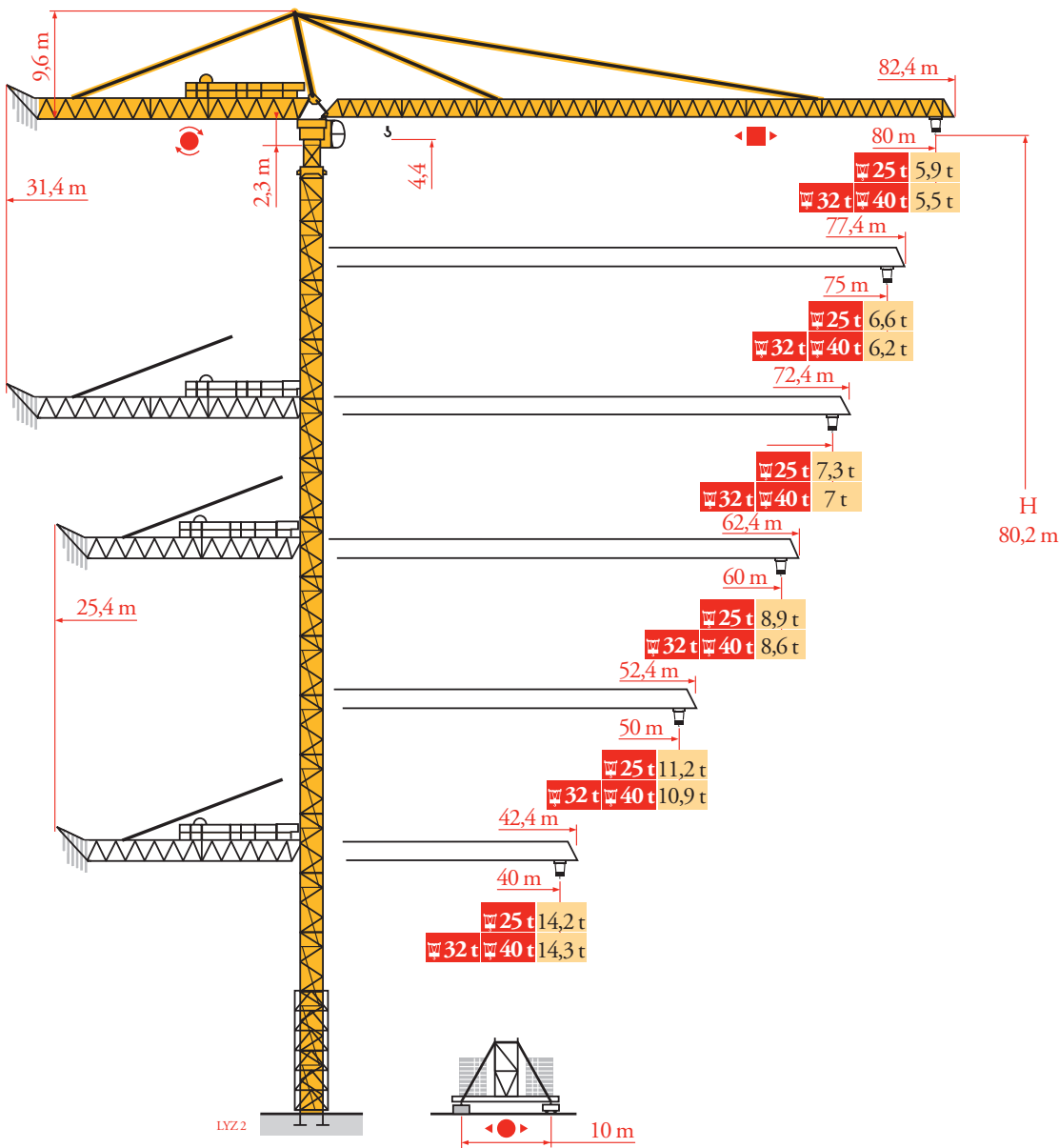




Grove    Manitowoc    National Crane    Potain



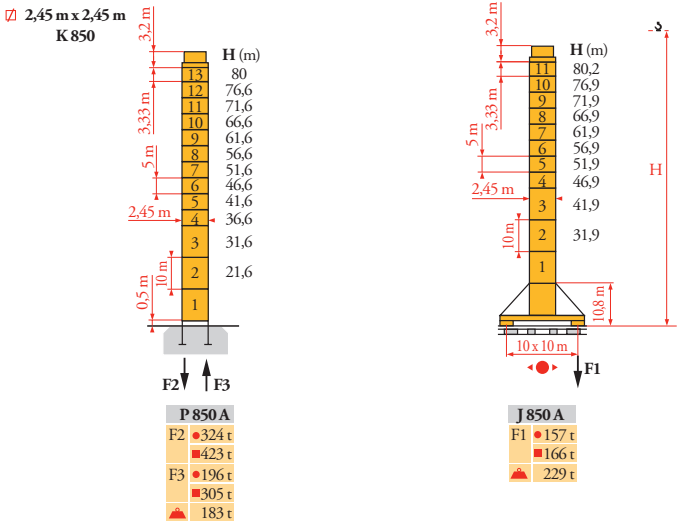
# Potain MD 650





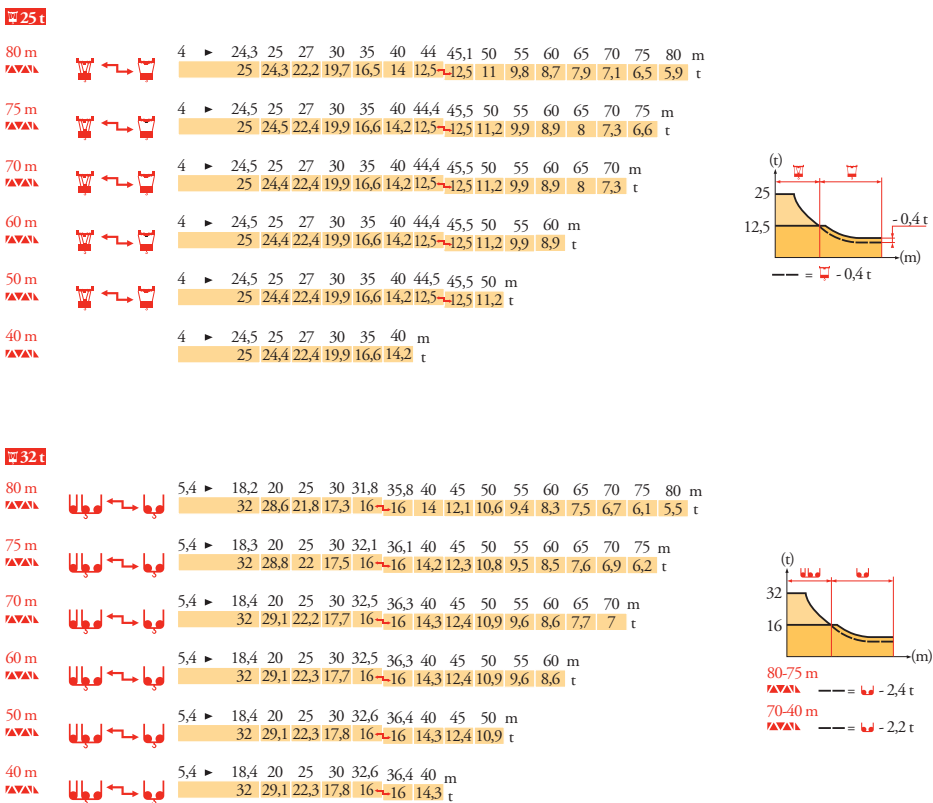
Mat / Réactions  
Maste / Eckdrücke  
Masts / Reactions  
Mástil / Reacciones  
Torre / Reazioni  
Tramo / Reacções  
Композиции башни /  
Реакции

LV2.3



Courbes de charges  
Lastkurven  
Load diagrams  
Curvas de cargas  
Curva de cargas  
Диаграммы  
грузоподъемностей

LV2.3



FR	DE	EN	ES	IT	PT	RU
Réactions en service	Reaktionskräfte in Betrieb	Reactions in service	Reacciones en servicio	Reazioni in servizio	Reacções em serviço	Реакции при работе
Réactions hors service	Reaktionskräfte außer Betrieb	Reactions out of service	Reacciones fuera de servicio	Reazioni fuori servizio	Reacções fora de serviço	Реакции в покое
A vide sans lest (ni train de transport) avec flèche et hauteur maximum	Ohne Last, Ballast (und Transportachse), mit Maximalausleger und Maximalhöhe	Without load, ballast (or tren de transporte), with maximum jib and maximum height	Sin carga, sin lastre, (ni tren de transporte), flecha y altura máxima	A vuoto, senza zavorra (ne assali di trasporto) con braccio massimo e altezza massima	Sem carga (nem trem de transporte)- sem lastro com lança e altura máximas	Вес без груза, балласта (или транспортных осей), с максимальной длиной стрелы и максимальной высотой



Courbes de charges

Lastkurven

Load diagrams

Curvas de cargas

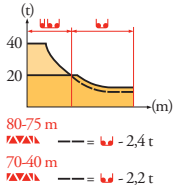
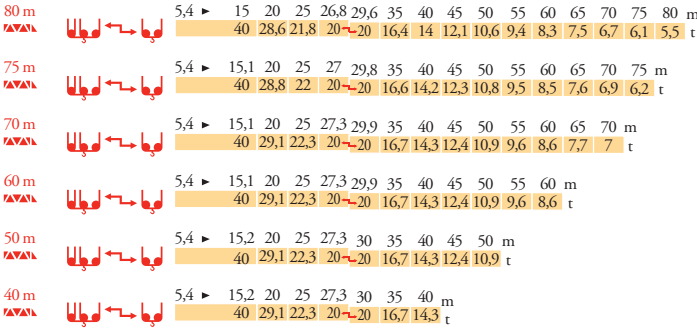
Curve di carico

Curva de cargas

Диаграммы грузоподъемностей

LYZ 3

40 t



Lest de contre-flèche

Gegenauslegerballast

Counter-jib ballast






Lastre de contra flecha

Contrappeso

Lastros da contra lança

Балласт на консоли

LYZ 3

		5 900 kg - 4 200 kg - 2 800 kg		
		150 LCC	250 LCC	200 LBR
		 (kg)	 (kg)	 (kg)
80 m	31,4 m	33 700	33 700	33 700
75 m	31,4 m	32 300	32 300	32 300
70 m	31,4 m	27 800	27 800	27 800
60 m	25,4 m	33 700	33 700	33 700
50 m	25,4 m	27 800	27 800	27 800
40 m	25,4 m	21 900	21 900	21 900

Lest de base - Grundballast

Base ballast - Lastre de base

Zavorra di base - Lastros da base

Базовый балласт

LYZ 3

2,45 m	J 850 A	H (m)	80,2	76,9	71,9	66,9	61,9	56,9	51,9	46,9	41,9	36,9	31,9
		▲ (t)	60	60	60	60	60	60	60	60	60	60	60



FR

Nous consulter

DE

Auf Anfrage

EN

Consult us

ES

Consultarnos

IT

Consultateci

PT

Consultar-nos

RU

Проконсультируйтесь у нас



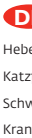
Mécanismes  
Antriebe  
Mechanisms  
Mecanismos  
Meccanismi  
Mecanismos  
Механизмы

LYZ 6

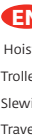
														ch - PS hp	kW							
	150 LCC 63		25 t	m/min	46	56	70	92	110	23	28	35	46	55	150	110	461 m					
				t	12,5	9,4	6,25	3,1	1,6	25	18,8	12,5	6,2	3,2								
	250 LCC 80		32 t	m/min	52	68	86	108	122	26	34	43	54	61	250	180	619 m					
				t	16	12	8	4	2	32	24	16	8	4								
	250 LCC 100		40 t	m/min	46	60	76	96	108	23	30	38	48	54	250	180	488 m					
				t	20	15	10	5	2,5	40	30	20	10	5								
	15 DVF 16		25 t	m/min	0 → 47 (25 t) - 0 → 63 (12,5 t) - 0 → 76 (6,25 t) - 0 → 100 (3,13 t)										15	11						
			32 t	m/min	0 → 33 (32 t) - 0 → 50 (16 t) - 0 → 67 (8 t) - 0 → 100 (2 t)																	
			40 t	m/min	0 → 33 (40 t) - 0 → 50 (20 t) - 0 → 67 (10 t) - 0 → 100 (2,5 t)																	
	200 LBR 100		40 t	m/min	3,6/36	5,6/56	9/90	14,4/144	1,8/18	2,8/28	4,5/45	7,2/72	200	150	650 m							
				t	20	12,3	7,2	4	40	24,4	14,3	8										
	15 DVF 16		40 t	m/min	0 → 50 (20 t) 0 → 67 (7,5 t) 0 → 100 (2,5 t)					0 → 33 (40 t) 0 → 67 (8,2 t) 0 → 100 (2,5 t)					15	11						
	RVF 192 Optima +		t/min U/min rpm	0 → 0,6										2 x 15	2 x 11							
J 850 A 			m/min																			
CEI 38					IEC 38																	
400 V (+6% -10%) 50 Hz					150 LCC : 190 kVA 250 LCC : 350 kVA 200 LBR : 240 kVA																	



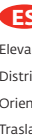
FR  
Levage  
Distribution  
Orientation  
Translation



DE  
Heben  
Katzfahren  
Schwenken  
Kranfahren



EN  
Hoisting  
Trolleying  
Slewing  
Travelling



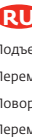
ES  
Elevación  
Distribución  
Orientación  
Traslación



IT  
Sollevamento  
Distribuzione  
Rotazione  
Traslazione



PT  
Elevação  
Distribuição  
Rotação  
Translação



RU  
Подъем  
Перемещение каретки  
Поворот  
Перемещение крана



Document commercial  
non contractuel. Pour  
toute information  
technique se référer à la  
notice correspondante.

Unverbindliches  
Vertriebsdokument. Für  
technische Informationen,  
siehe die entsprechenden  
Anweisungen.

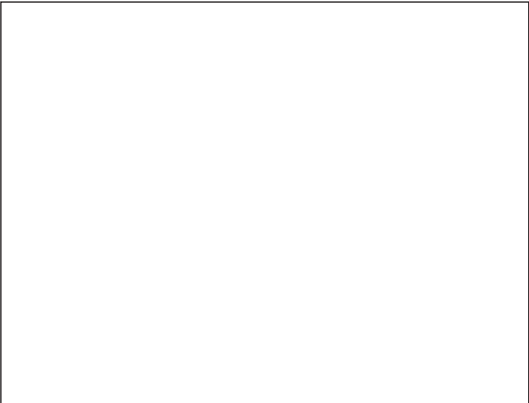
This commercial document  
is not legally binding. For  
any technical information,  
please refer to the  
corresponding instructions.

Documento commercial  
no contractual. Para  
cualquier información  
técnica, ver la noticia  
correspondiente.

Documento commerciale  
non vincolante, per tutte  
le informazioni tecniche  
fare riferimento al  
catalogo istruzioni.

Documento comercial não  
contratual. Para qualquer  
informação técnica  
complementar consultar  
as respectivas instruções.

Этот коммерческий документ  
не является юридически  
обязательным. Для получения  
технической информации, см.  
соответствующие инструкции.



MD 650



**Manitowoc - Americas - World Headquarters**  
2400 S. 44th Street • Manitowoc • WI 54220 USA  
Tel: +1 920 684 4410 • Fax: +1 920 652 9778

**Manitowoc - Europe, Middle East & Africa**  
Manitowoc France SAS  
18, rue de Charbonnières B.P. 173 • 69132 ECULLY Cedex • FRANCE  
Tel: +33 (0)4 72 18 20 20 • Fax: +33 (0)4 72 18 20 00

**Manitowoc - Asia Pacific**  
16F Xu Hui Yuan Building,  
1089 Zhongshan No.2 Road (S) • Shanghai 200030 China  
Tel: +86 21 6457 0066 • Fax: +86 21 6457 4955

Réf. 2003 48 LYZ 6